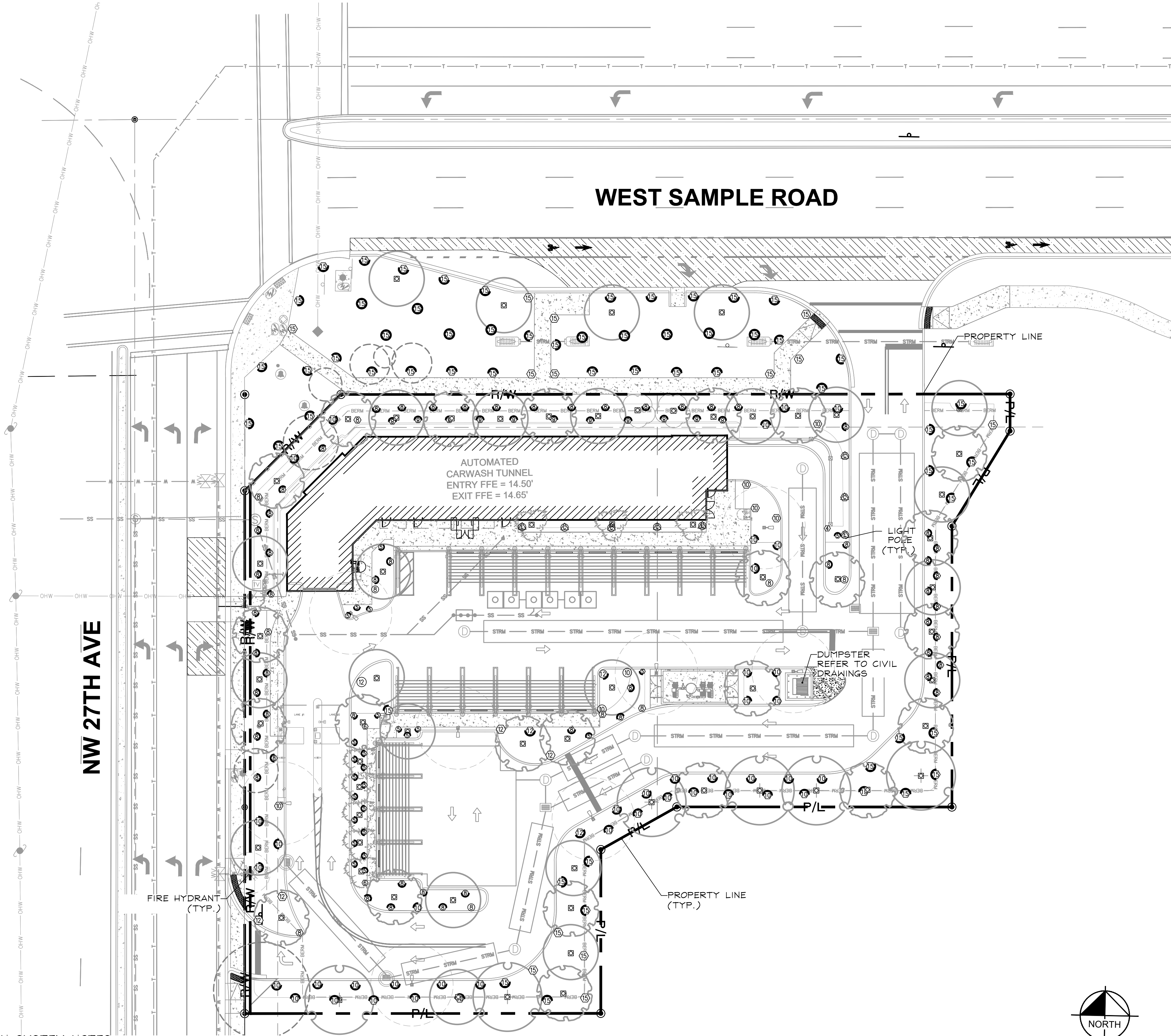


IRRIGATION SYSTEM NOTES

- CONTRACTOR SHALL REFER TO THE IRRIGATION DETAILS, IRRIGATION SCHEDULE, SPECIFICATIONS AND ALL CONTRACT DOCUMENTS FOR FURTHER AND COMPLETE INSTRUCTIONS.
 - IRRIGATION QUANTITIES ARE PROVIDED FOR CONVENIENCE. IN THE EVENT OF QUANTITY DISCREPANCIES THE DRAWING SHALL TAKE PRECEDENCE. ANY DISCREPANCIES SHALL BE BROUGHT TO THE ATTENTION OF THE LANDSCAPE ARCHITECT PRIOR TO BIDDING.
 - ANY SUBSTITUTIONS FOR SPECIFIED IRRIGATION EQUIPMENT MUST BE APPROVED BY THE LANDSCAPE ARCHITECT OR OWNER'S REPRESENTATIVE IN WRITING PRIOR TO CONSTRUCTION.
 - CONTRACTOR SHALL FIELD ADJUST LOCATION OF IRRIGATION EQUIPMENT AS NECESSARY TO AVOID DAMAGE TO EXISTING UNDERGROUND UTILITIES AND/OR INTERFERE WITH EXISTING ABOVE GROUND ELEMENTS. ALL FIELD ADJUSTMENTS SHALL BE COMPLETED AT THE CONTRACTOR'S EXPENSE AND SHALL BE COORDINATED WITH THE OWNER'S REPRESENTATIVE AND THE LANDSCAPE ARCHITECT.
 - CONTRACTOR SHALL FAMILIARIZE HIM/HERSELF WITH THE LIMITS OF WORK AND EXISTING CONDITIONS AND VERIFY ALL INFORMATION. IF DISCREPANCIES EXIST, CONTRACTOR SHALL NOTIFY OWNER'S REPRESENTATIVE IN WRITING WITHIN SEVEN CALENDAR DAYS OF NOTICE TO PROCEED.
 - IRRIGATION PLAN IS DIAGRAMMATIC. EQUIPMENT SHOWN ON IMPERVIOUS SURFACES IS FOR GRAPHIC CLARITY UNLESS OTHERWISE NOTED. CONTRACTOR SHALL INSTALL ALL EQUIPMENT WITHIN LANDSCAPE AREAS IN PROPERTY LIMITS.
- THE IRRIGATION SYSTEM IS DESIGNED TO OPERATE WITH A SOURCE PROVIDING xx GPM AT xx PSI.
- SPRAY HEAD DESIGN PRESSURE: 30 PSI
BUBBLER DESIGN PRESSURE: 30 PSI



IRRIGATION SCHEDULE

SYMBOL	MANUFACTURER/MODEL/DESCRIPTION	QTY	PSI
EST LCS RCS CST SST	Rain Bird 1806 15 Strip Series Turf Spray 6.0in. Pop-Up Sprinkler with Co-Molded Wiper Seal, Side and Bottom Inlet, 1/2in. NPT Female Threaded Inlet.	3	30
Q H F	Rain Bird 1806 5 Series MPR Turf Spray 6.0in. Pop-Up Sprinkler with Co-Molded Wiper Seal, Side and Bottom Inlet, 1/2in. NPT Female Threaded Inlet.	18	30
Q T H F	Rain Bird 1806 8 Series MPR Turf Spray 6.0in. Pop-Up Sprinkler with Co-Molded Wiper Seal, Side and Bottom Inlet, 1/2in. NPT Female Threaded Inlet.	58	30
Q T H F	Rain Bird 1806 10 Series MPR Turf Spray 6.0in. Pop-Up Sprinkler with Co-Molded Wiper Seal, Side and Bottom Inlet, 1/2in. NPT Female Threaded Inlet.	39	30
Q T H F	Rain Bird 1806 12 Series MPR Turf Spray 6.0in. Pop-Up Sprinkler with Co-Molded Wiper Seal, Side and Bottom Inlet, 1/2in. NPT Female Threaded Inlet.	2	30
Q T H F	Rain Bird 1806 15 Series MPR Turf Spray 6.0in. Pop-Up Sprinkler with Co-Molded Wiper Seal, Side and Bottom Inlet, 1/2in. NPT Female Threaded Inlet.	56	30
Q T H F	Rain Bird 1806 ADJ Turf Spray 6.0in. Pop-Up Sprinkler with Co-Molded Wiper Seal, Side and Bottom Inlet, 1/2in. NPT Female Threaded Inlet.	31	30
EST LCS RCS CST SST	Rain Bird 1812 15 Strip Series Shrub Spray 12in. Pop-Up Sprinkler with Co-Molded Wiper Seal, Side and Bottom Inlet, 1/2in. NPT Female Threaded Inlet.	5	30
Q H F	Rain Bird 1812 5 Series MPR Shrub Spray 12in. Pop-Up Sprinkler with Co-Molded Wiper Seal, Side and Bottom Inlet, 1/2in. NPT Female Threaded Inlet.	7	30
Q T H F	Rain Bird 1812 8 Series MPR Shrub Spray 12in. Pop-Up Sprinkler with Co-Molded Wiper Seal, Side and Bottom Inlet, 1/2in. NPT Female Threaded Inlet.	7	30
Q T H F	Rain Bird 1812 10 Series MPR Shrub Spray 12in. Pop-Up Sprinkler with Co-Molded Wiper Seal, Side and Bottom Inlet, 1/2in. NPT Female Threaded Inlet.	2	30
Q T H F	Rain Bird 1812 12 Series MPR Shrub Spray 12in. Pop-Up Sprinkler with Co-Molded Wiper Seal, Side and Bottom Inlet, 1/2in. NPT Female Threaded Inlet.	1	30
Q T H F	Rain Bird 1812 15 Series MPR Shrub Spray 12in. Pop-Up Sprinkler with Co-Molded Wiper Seal, Side and Bottom Inlet, 1/2in. NPT Female Threaded Inlet.	1	30
Q T H F	Rain Bird 1812 ADJ Shrub Spray 12in. Pop-Up Sprinkler with Co-Molded Wiper Seal, Side and Bottom Inlet, 1/2in. NPT Female Threaded Inlet.	7	30
Q T H F	Rain Bird 1804-1400 Flood Flood Bubbler 4.0in. popup, install w/ PA-80 adapter.	53	30

Valve Callout

Valve Number

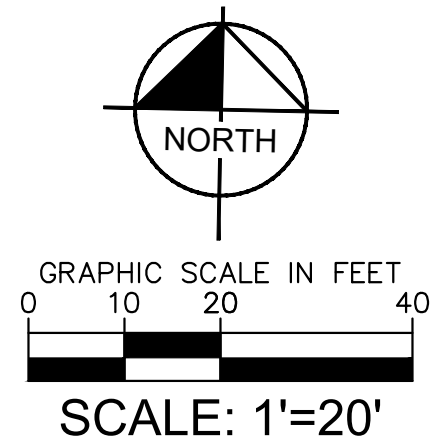
Valve Flow

Valve Size

PLAN IS DIAGRAMMATIC.
CONTRACTOR SHALL
INSTALL ALL IRRIGATION
EQUIPMENT IN LANDSCAPE
OR TURF AREAS WITHIN
PROJECT LIMITS.

SLEEVE SIZE SCHEDULE (SCH 40)

PIPE SIZE (or combination of pipe sizes)	SLEEVE SIZE
1"	2"
1 1/2"	4"
2"	4"
3"	6"
4"	6"
6"	12"



THE PRESENCE OF GROUNDWATER SHOULD BE ANTICIPATED. CONTRACTOR'S BID SHALL INCLUDE CONSIDERATION FOR ADDRESSING THIS ISSUE AND OBTAINING ALL NECESSARY PERMITS.

ALL ELEVATIONS SHOWN ON THESE PLANS ARE BASED ON THE NAVD 88. TO CONVERT THE ELEVATION HEREON TO NGVD 29 ADD 1.51 FEET.

KNOW WHAT'S BELOW
ALWAYS CALL 811
BEFORE YOU DIG

It's fast. It's free. It's the law.
www.callsunshine.com